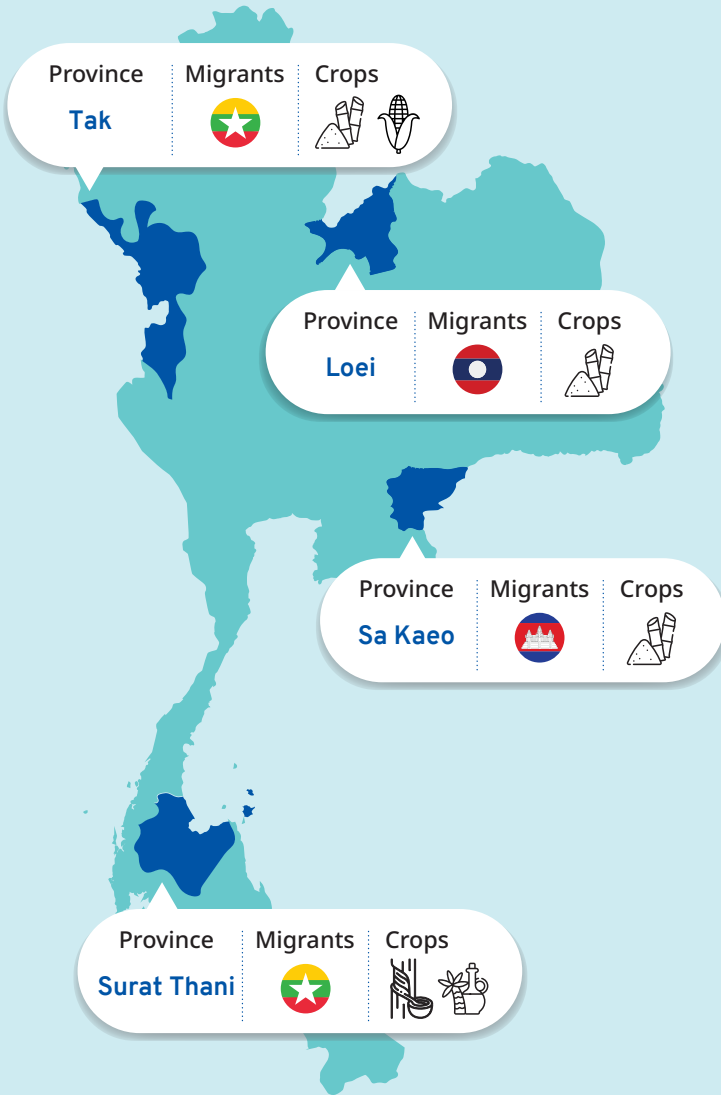




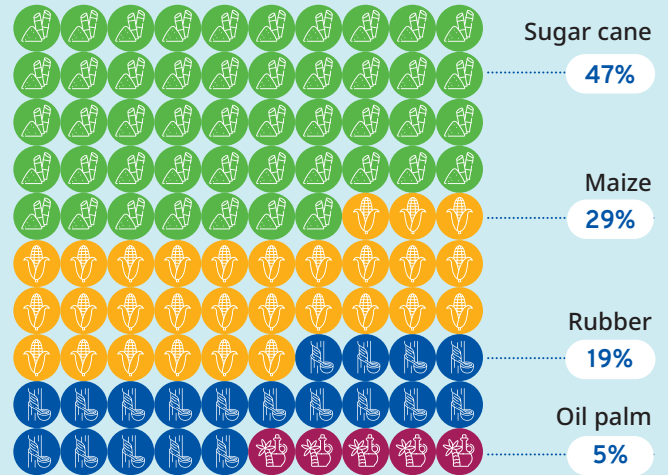
Working and employment conditions in the agriculture sector in Thailand: A survey of migrants working on Thai sugar cane, rubber, oil palm and maize farms.

Survey summary

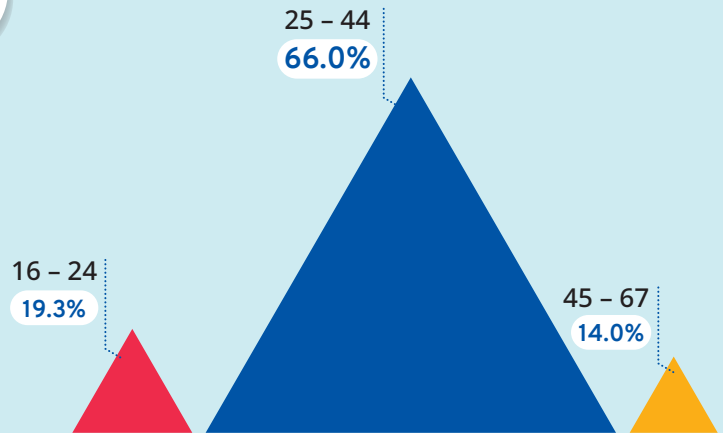
Survey provinces



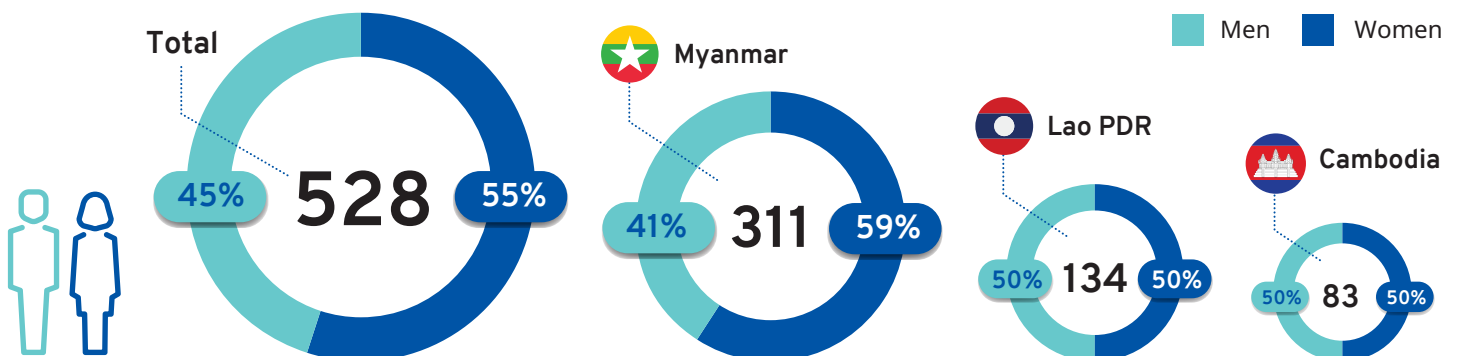
Survey participants by sector



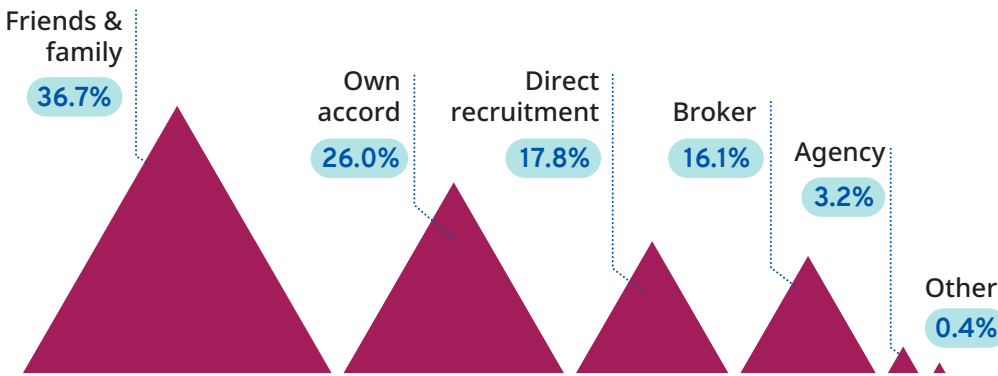
Survey participants by age



Survey participants by nationality



▶ How survey participants found work in Thailand



▶ Cost of migration

Average paid to migrate

6,448 Baht

Equivalent to approx. one month's wages



9.1%

paid nothing

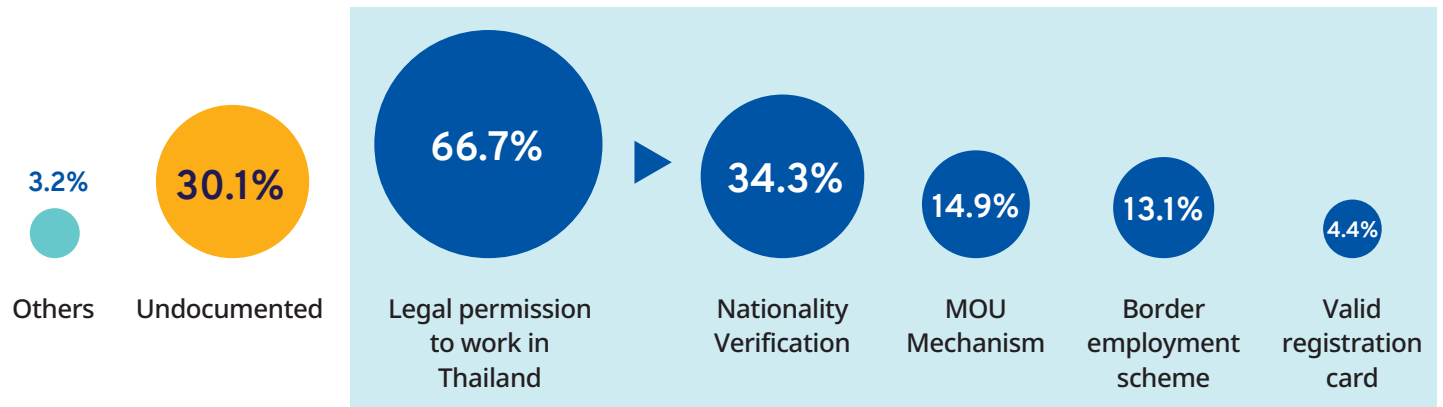


26.7%

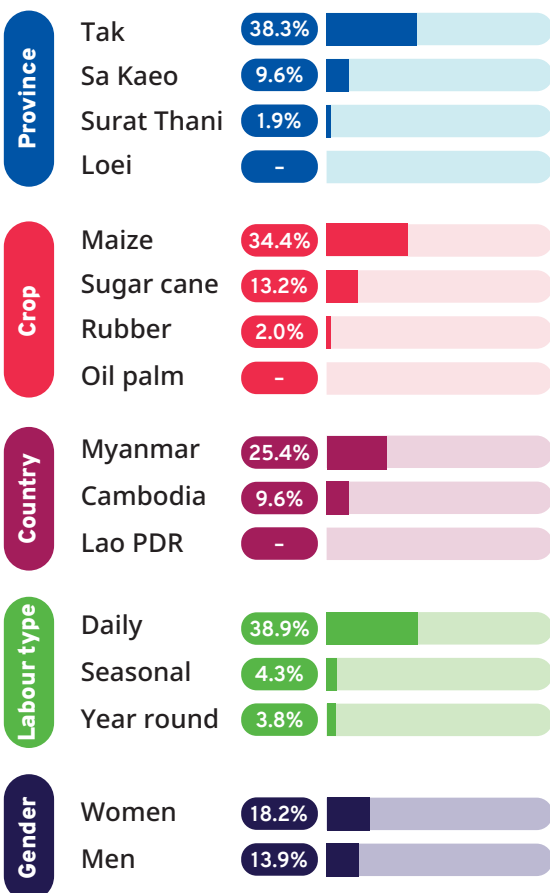
Paid less than 10,000 Baht



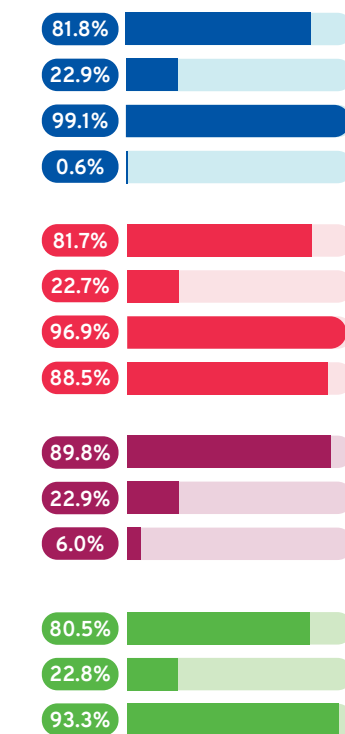
▶ Legal status of survey participants and type of documentation



▶ Undocumented survey participants



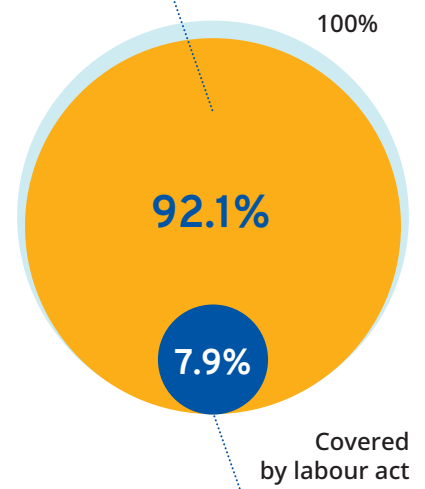
▶ No contract prior to migration



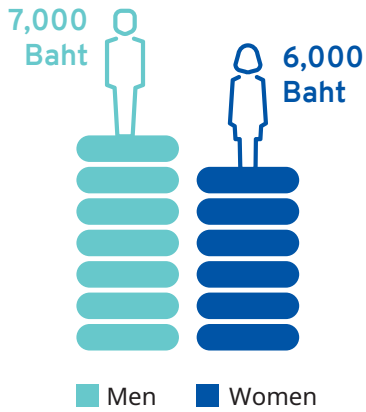
▶ Labour rights of survey participants



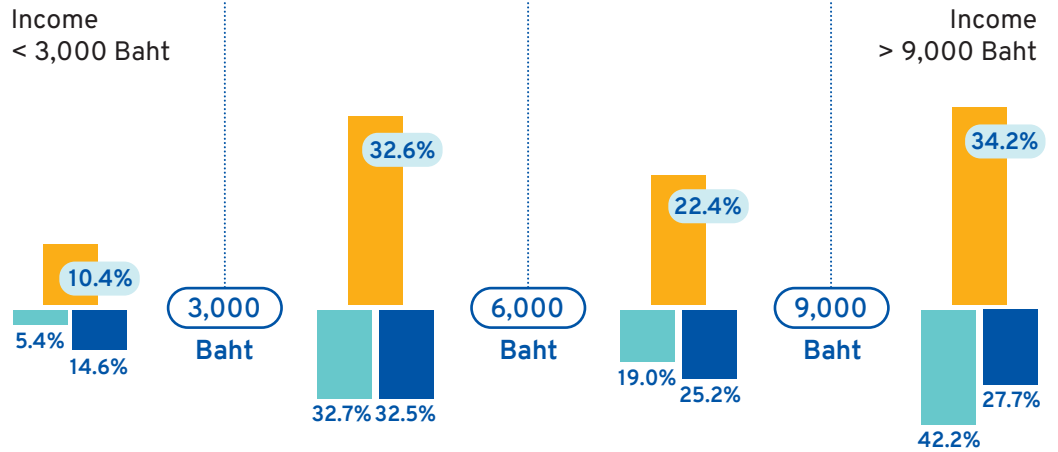
Reduced protections



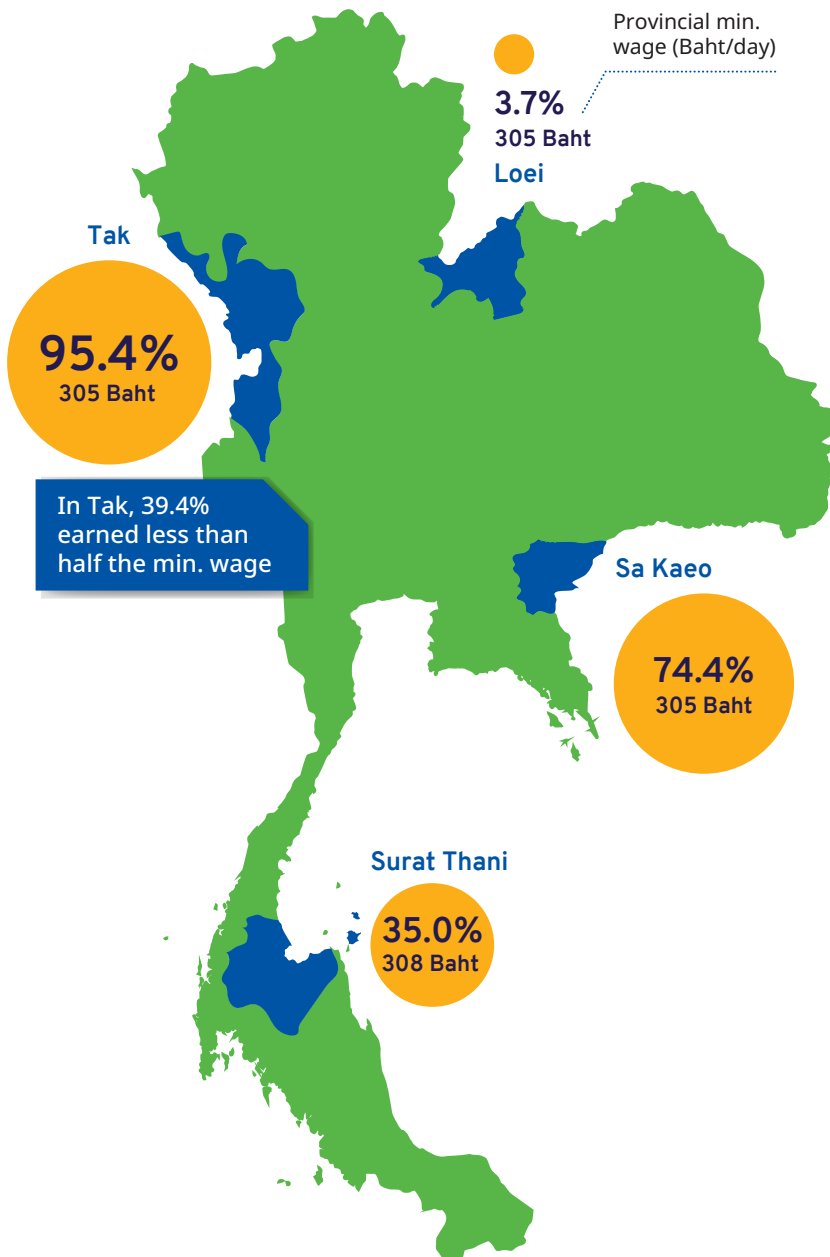
▶ Median monthly income



▶ Monthly income of survey participants

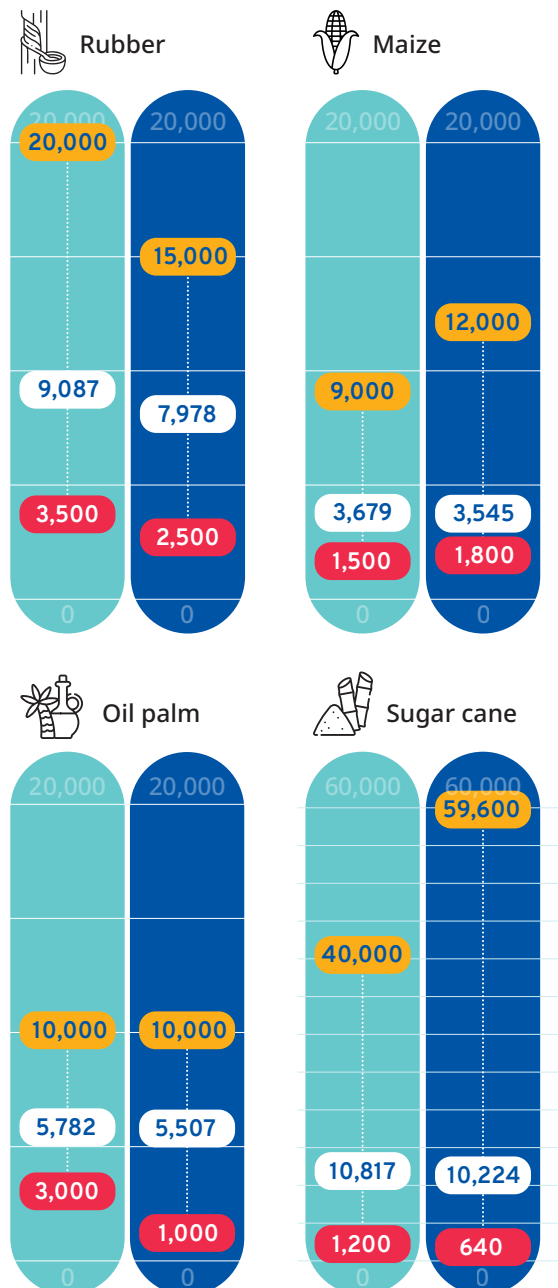


▶ Workers earning below the provincial minimum wage

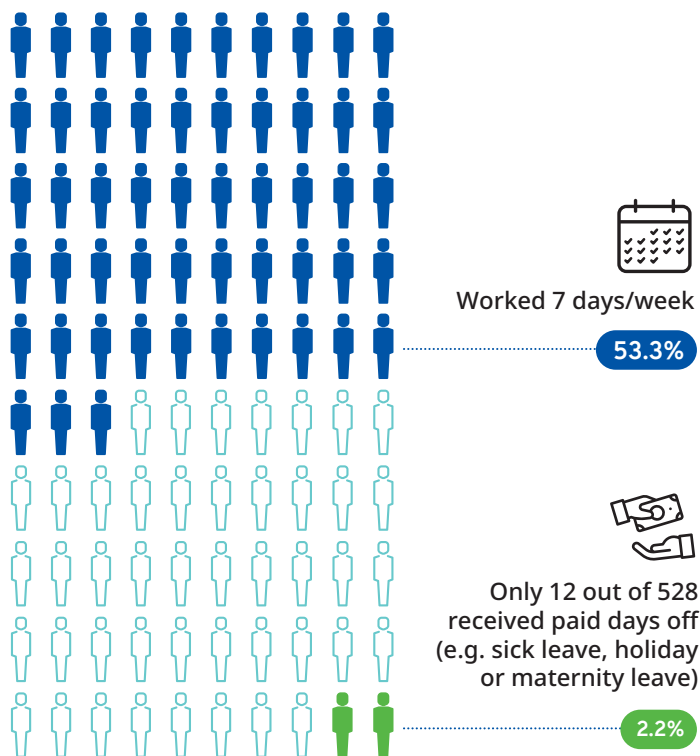


▶ Monthly income by crop sector (Baht)

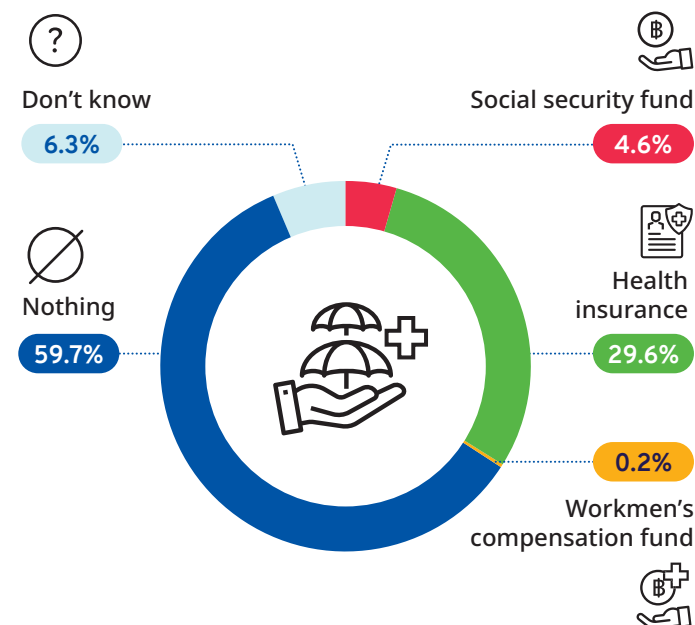
Max. Mean Min. Men Women



▶ Working hours & days



▶ Access to social security & medical services



▶ Problems at work

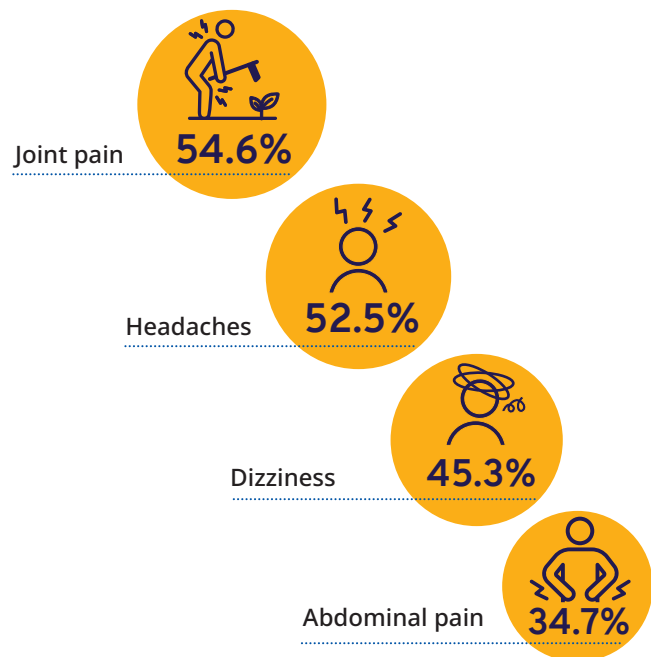


Common problems



0 Only 10 had made complaints but none through official channels

▶ Health issues experienced by survey participants



International Labour Organization

United Nations Building
Rajdamnern Nok Avenue,
Bangkok 10200, Thailand

Copyright: ILO 2022

Working and employment conditions in the agriculture sector in Thailand: A survey of migrants working on Thai sugar cane, rubber, oil palm and maize farms was produced by the TRIANGLE in ASEAN programme.

The report can be downloaded at:

bit.ly/migrants_Thailand_agriculture

Supported by

