



**International
Labour
Organization**

ILO Country Office for the Philippines (CO-Manila)

LIST OF LIBRARY

Catalogue of New Publications

April 2022



Care at work: Investing in care leave and services for a more gender equal world of work

The report provides a global overview of national laws and practices regarding care policies, namely maternity protection, paternity, parental and other care-related leave

and other care-related leave policies, as well as childcare and long-term care services.

[Care at work: Investing in care leave and services for a more gender equal world of work \(ilo.org\)](#)

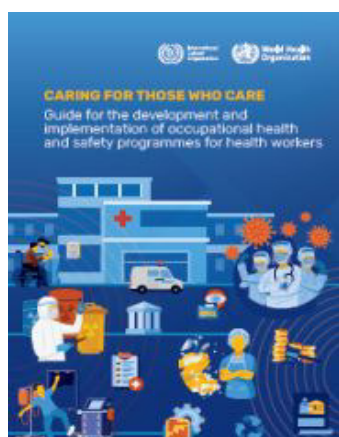
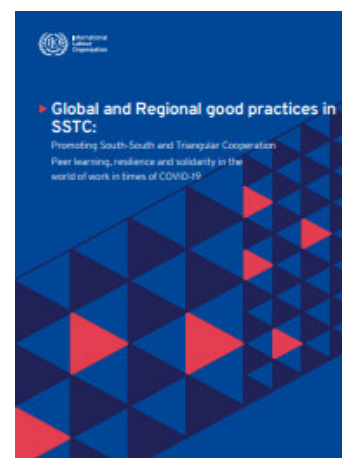
Publisher: ILO-Geneva

Global and regional good practices in SSTC: Promoting South-South and Triangular Cooperation

Peer learning, resilience, and solidarity in the world of work in times of COVID-19

[Report: Global and Regional Good Practices in SSTC: Promoting South-South and Triangular Cooperation \(ilo.org\)](#)

Publisher: ILO -Geneva



Caring for those who care – Guide for the development and implementation of occupational health and safety programmes for health workers

This guide provides an overview of the key elements of occupational health and safety programmes for health

workers at national, subnational, and facility levels, as well as advice for the development and implementation of such programmes.

[Caring for those who care – Guide for the development and implementation of occupational health and safety programmes for health workers \(ilo.org\)](#)

Publishers: World Health Organization and International Labour Organization

Gender-inclusive service provision: A quick guide for financial and business development services providers

The guide explains the benefits of targeting women entrepreneurs and women-led businesses and how to tailor products and service delivery to them.

[Women's entrepreneurship development: Gender-inclusive service provision: A quick guide for financial and business development services providers \(ilo.org\)](#)

Publisher: ILO-Decent Work Technical Support Team for East and South-East Asia and the Pacific





Financing human-centred COVID-19 recovery and decisive climate action worldwide inter-national cooperation's twenty-first century moment of truth

This Working Paper provides a concrete illustration of how the existing international

financial architecture could be activated more fully to mobilize the large sums required to respond decisively to the "great divergence" in COVID-19 crisis recovery between advanced and developing countries as well as to the climate crisis.

[Financing human-centred COVID-19 recovery and decisive climate action worldwide \(ilo.org\)](https://www.ilo.org/public/english/workingpapers/w201.htm)

Publisher: ILO-Research Department (RESEARCH)

Enterprise formalization: Tailored registration, tax, and social security requirements for MSEs

This document is part of a series of briefs on Enterprise Formalization that describe some of the measures that can be taken to support on strategies that can formalization, in line with ILO Recommendation 204 concerning the Transition from the Informal to the Formal Economy.

[RessourcePDF.action \(social-protection.org\)](https://www.ilo.org/public/english/workingpapers/w201.htm)

Publishers: ILO-Small and Medium Enterprises Unit in close collaboration with the ILO's Social Protection Department



For further information, visit:

www.ilo.org/manila

Information on Labordoc is available at:

<http://www.ilo.org/public/english/support/lib/labordoc/index.htm>