



Governing Body

332nd Session, Geneva, 8–22 March 2018

GB.332/PFA/INF/5(Rev.)

Programme, Financial and Administrative Section

PFA

FOR INFORMATION

Composition and structure of the staff as at 31 December 2017

Summary: This document provides information on the composition and structure of the staff of the Office.

Author unit: Human Resources Development Department (HRD).

Related documents: None.

This document provides information on the composition and structure of the staff of the Office. It is presented as follows:

Part I	General overview
Table I	Distribution of staff according to category, place of assignment, type of contract and source of funds on 31 December 2017
Chart I	Distribution of staff according to place of assignment, category and type of contract on 31 December 2017
Chart II	Number of staff according to staff category and source of funds over the last six years (from 31 December 2011 to 31 December 2017)
Chart III	Percentage of staff by length of service and source of funds as at 31 December 2017
Chart IV	Percentage of staff by length of service as at 31 December 2017 (all categories of staff)
Part II	Gender and age diversity
Table II	(a) Distribution by age, gender and grade of Professional and higher category staff, as at 31 December 2017, with percentages of women for 2016 and 2017 (regular staff) (b) Distribution by age, gender and grade, as at 31 December 2017, with percentages of women for 2016 and 2017 (all categories of staff)
Chart V	Distribution by gender and grade of staff newly appointed between 1 January and 31 December 2017 in the Professional category and above (regular staff)
Chart VI	Distribution by age and gender of staff newly appointed between 1 January and 31 December 2017 in the Professional category and above (regular staff)
Chart VII	Number of Professional and higher category staff, by gender, in service over ten years (from 31 December 2008 to 31 December 2017) (regular staff)
Chart VIII	(a) Number of Professional and higher category staff, by age, in service over ten years (from 31 December 2008 to 31 December 2017) (regular staff) (b) Number of Professional and higher category staff, by age, as at 31 December 2017 (regular staff)
Part III	Staff mobility
Table III	Number of staff movements including geographical mobility, transfers within grade, interagency mobility, promotions and cessations of service, in 2016–17 (regular staff)

Part IV Geographical diversity

Table IV Overall distribution by region, country of nationality, including movements of regular staff in the Professional and higher category (1 January–31 December 2017)

Table V Unrepresented nationalities on non-linguistic posts, as at 31 December 2017

Table VI Composition of staff newly appointed between 1 January and 31 December 2017 in the Professional category and above (regular staff)

(a) Non-linguistic staff subject to geographical distribution

(b) Linguistic staff not subject to geographical distribution

Part V ILO presence

Table VII ILO presence by duty station, as at 31 December 2017 (all categories of staff)

Part I. General overview

Table I. Distribution of staff according to category, place of assignment, type of contract and source of funds, as at 31 December 2017

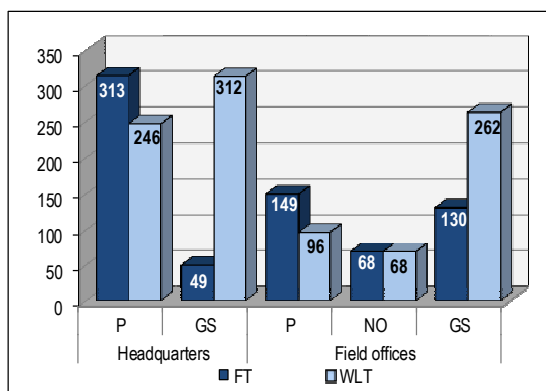
Category of staff and place of assignment	Officials employed					Total
	Regular staff			Technical cooperation staff *		
	WLT	FT	Subtotal	FT	Subtotal	
Headquarters						
Professional category and above (P)	246	313	559	176	176	735
General Service category (GS)	312	49	361	42	42	403
Subtotal	558	362	920	218	218	1 138
Field Offices						
Professional category and above (P)	96	149	245	182	182	427
National Officer category (NO)	68	68	136	416	416	552
General Service category (GS)	262	130	392	443	443	835
Subtotal	426	347	773	1 041	1 041	1 814
Grand total	984	709	1 693	1 259	1 259	2 952

WLT = Without limit of time. FT = Fixed term.

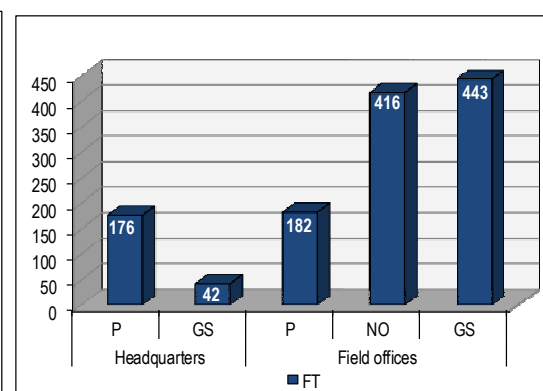
* Positions funded by TC, PSI, RBSA and other extra-budgetary resources.

Chart I. Distribution of staff according to place of assignment, category and type of contract on 31 December 2017

Regular staff



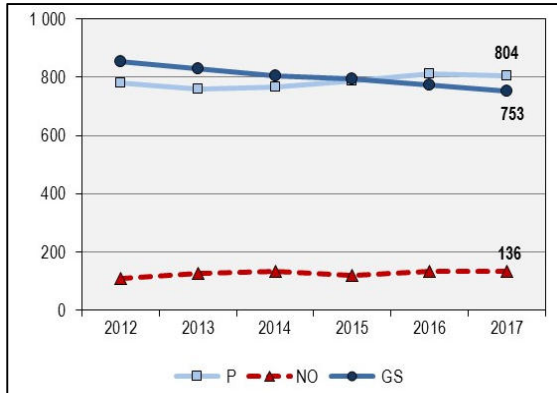
Technical cooperation staff



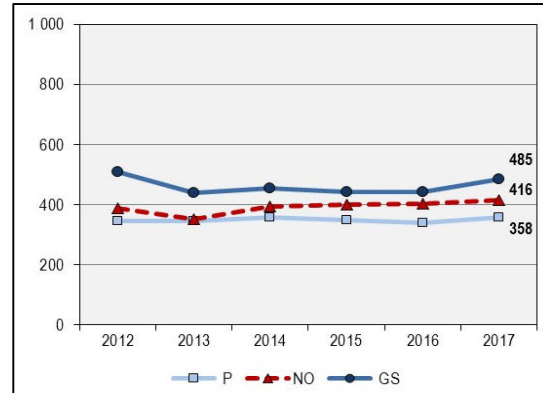
Source: Table I.

Chart II. Number of staff according to staff category and source of funds over the last six years

Regular staff



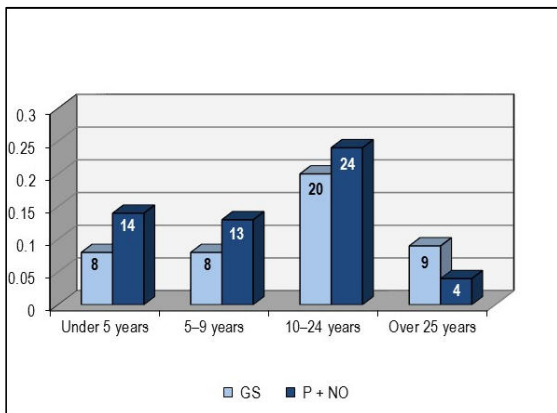
Technical cooperation staff



Source: Table I above and data from previous PFAC documents on composition and structure of staff.

Chart III. Percentage of staff by length of service and source of funds as at 31 December 2017

Regular staff



Technical cooperation staff

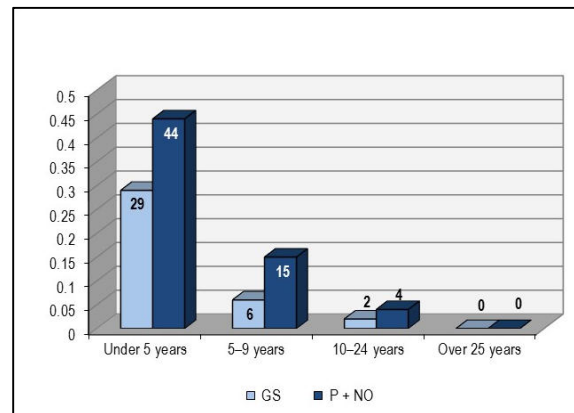
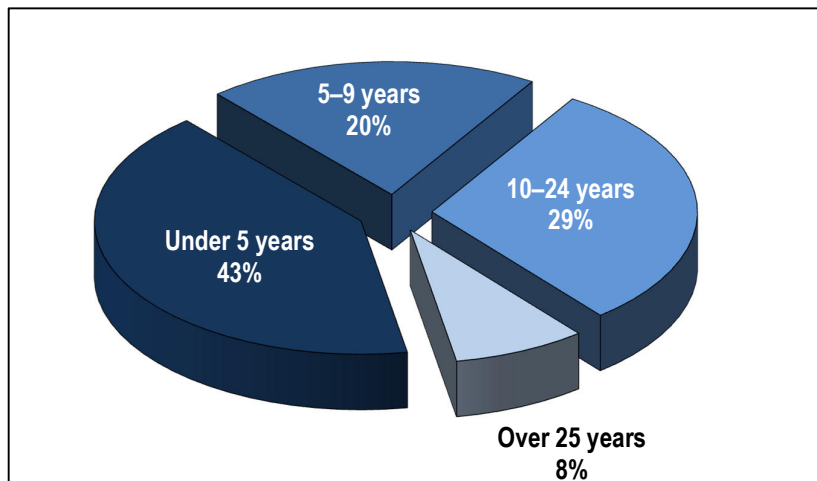


Chart IV. Percentage of staff by length of service as at 31 December 2017 (all categories of staff)



Part II. Gender and age diversity

Table II(a). Distribution by age, gender and grade of Professional and higher category staff on 31 December 2017, with percentages of women for 2016 and 2017 (regular staff)

Grade	35 and under		36–45		46–55		Over 55		Subtotal		Grand total	% of women	
	F	M	F	M	F	M	F	M	F	M		2016	2017
D-G	–	–	–	–	–	–	–	1	–	1	1	–	–
D-DG	–	–	–	–	–	–	1	1	1	1	2	33.3	50.0
A-DG	–	–	–	–	1	–	2	4	3	4	7	25	42.9
D.2	–	–	–	–	5	4	5	8	10	12	22	39.1	45.5
D.1	–	–	2	1	12	22	11	22	25	45	70	38.9	35.7
P.5	–	–	13	21	43	92	37	56	93	169	262	34.6	35.5
P.4	3	4	56	53	51	54	16	26	126	137	263	49.1	47.9
P.3	15	5	34	18	27	23	2	2	78	48	126	59.6	61.9
P.2	14	13	8	10	3	–	–	–	25	23	48	56.1	52.1
P.1	3	–	–	–	–	–	–	–	3	0	3	–	100.0
Other *	–	–	–	–	–	–	–	–	–	–	–	–	–
Subtotal	35	22	113	103	142	195	74	120	364	440	804	44.9	45.3
% by gender within age group	61.4	38.6	52.3	47.7	42.1	57.9	38.1	61.9	45.3	54.7			
Total by age group (M and F)	57		216		337		194		804				
% of total	7.1		26.9		41.9		24.1		100				
Average age of staff at 31.12.17 (years)					47.2 (F)		49.8 (M)						
Global average age (years)					48.6								

F = Female. M = Male. * Professional staff only in Tokyo Office.

Table II(b). Distribution by age, gender and grade category on 31 December 2017, with percentages of women for 2016 and 2017 (all categories of staff)

Grade/ Category	35 and under		36–45		46–55		Over 55		Subtotal		% female	
	F	M	F	M	F	M	F	M	F	M	2016	2017
P	94	58	170	162	166	271	86	155	516	646	44.7	44.4
NO	85	34	127	125	66	64	28	23	306	246	54.0	55.4
GS	157	77	232	163	249	170	123	67	761	477	61.9	61.5
Subtotal	336	169	529	450	481	505	237	245	1 583	1 369	53.6	53.6
% by gender within age group	66.5	33.5	54.0	46.0	48.8	51.2	49.2	50.8	53.6	46.4		
Total by age group (F and M)	505		979		986		482		2 952			
% of total	17.1		33.2		33.4		16.3		100			
Average age of staff (years)			44.2 (F)		46.5 (M)							
Global average age (years)			45.3									

F = Female M = Male.

Chart V. Distribution by gender and grade of staff newly appointed between 1 January and 31 December 2017 in the Professional category and above (regular staff)

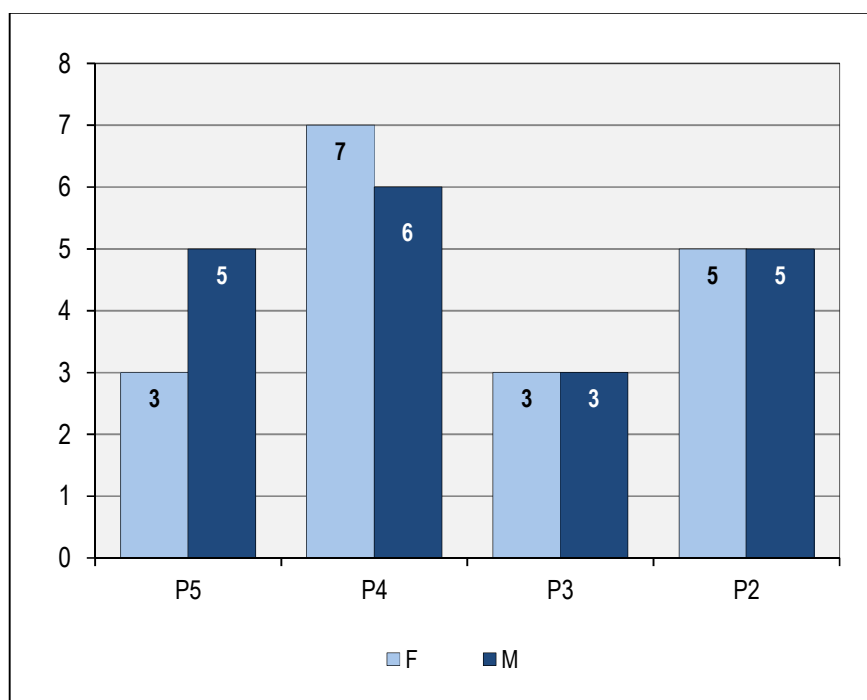


Chart VI. Distribution by age and gender of staff newly appointed between 1 January and 31 December 2017 in the Professional category and above (regular staff)

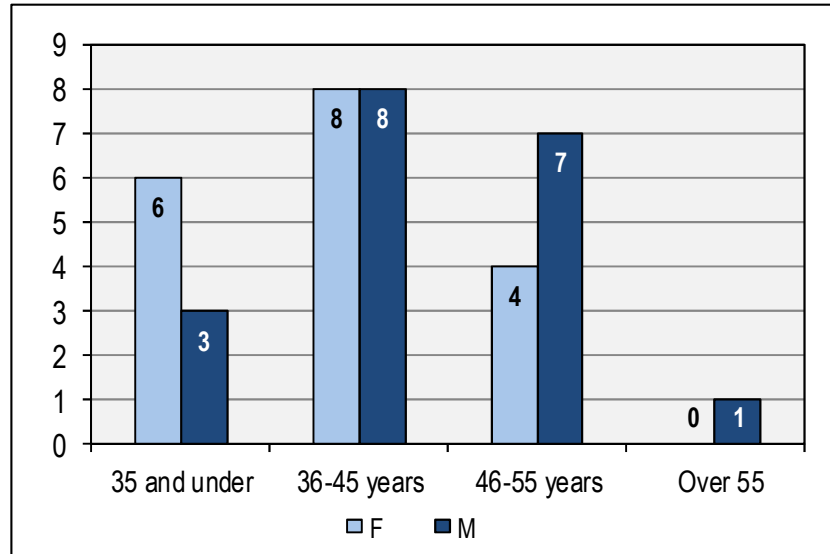
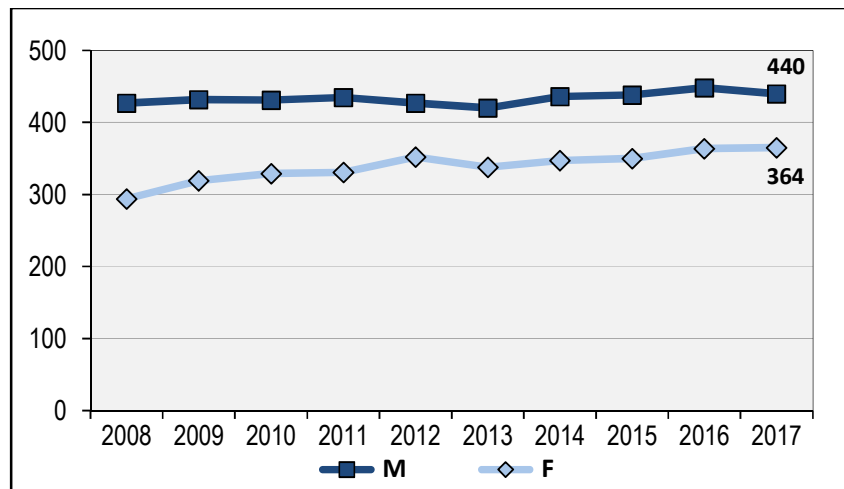
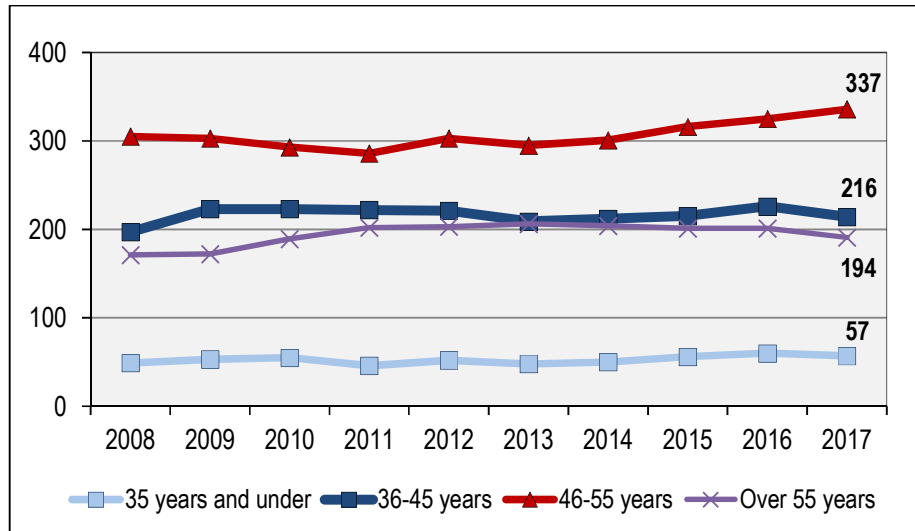


Chart VII. Number of Professional and higher category of staff by gender, in service over ten years (from 31 December 2008 to 31 December 2017) (regular staff)



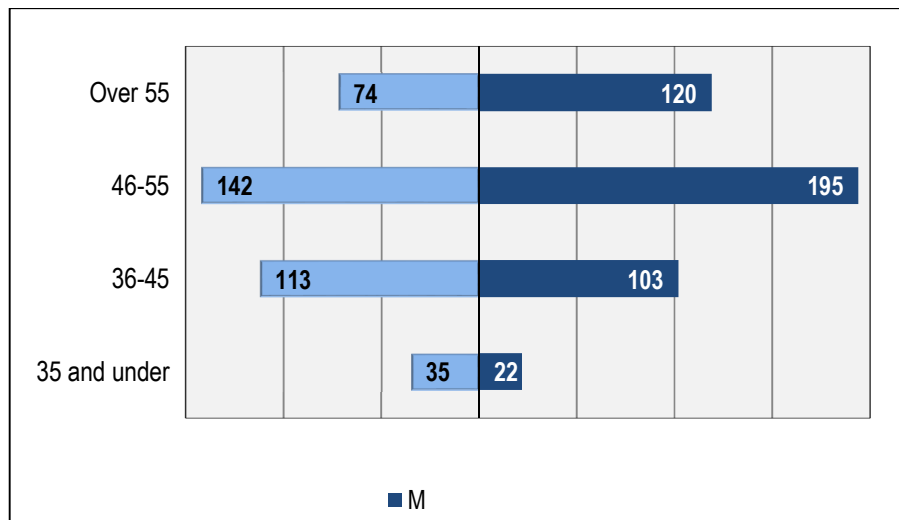
Source: Table II(a) above and data from previous PFAC documents on composition and structure of staff.

Chart VIII(a). Number of Professional and higher category staff by age, in service over ten years (from 31 December 2008 to 31 December 2017) (regular staff)



Source: Table II(a) above and data from previous PFAC documents on composition and structure of staff.

Chart VIII(b). Number of Professional and higher category staff by age, on 31 December 2017 (regular staff)



Source: Table II(a) above.

Part III. Staff mobility

Table III. Number of staff movements including geographical mobility, transfers within grade, inter-agency mobility, promotions and cessation of service, in 2016 and 2017 (regular staff)

Movement types	Year 2016				Year 2017				Total
	P *		GS **		P *		GS **		
	M	F	M	F	M	F	M	F	
Geographical mobility	18	14	0	2	36	26	5	0	101
Field to HQ	7	5	0	1	14	3	0	0	30
HQ to field	5	5	0	0	9	8	0	0	27
Field to field	6	4	0	1	13	15	5	0	44
Transfers within grade	49	51	13	28	47	40	5	13	246
Within regular budget	27	30	9	15	28	22	2	9	142
From technical cooperation	17	13	4	12	13	14	1	3	77
To technical cooperation	5	8	0	1	6	4	2	1	27
Inter-agency mobility	6	3	0	0	4	3	0	0	16
From UN agencies	4	2	0	0	2	2	0	0	10
To UN agencies	2	1	0	0	2	1	0	0	6
Promotions	23	21	17	28	25	26	2	9	151
Within same unit	12	15	13	25	10	18	2	5	100
Upon transfer	11	6	4	3	15	8	0	4	51
Cessation of service	42	36	17	44	35	27	16	23	240
Retirements	23	12	9	27	25	16	9	16	137
Other	19	24	8	17	10	11	7	7	103

* Professional category and above (including national Professional category).

** General Service category.

Part IV. Geographical diversity

Table IV. Overall distribution by region, country of nationality, including movements of staff in Professional and higher category (1 January–31 December 2017)

Country of nationality by region	Professional and higher category										All categories of staff
	Non-linguistic staff					Linguistic staff				Total	
	(a)	(b)	(c)	(d)	(e)	(a)	(b)	(c)	(d)		
	Staff on 31.12.16	Recruited 01.01.17–31.12.17	Departures 01.01.17–31.12.17	Staff on 31.12.17	D staff and above	Staff on 31.12.16	Recruited 01.01.17–31.12.17	Departures 01.01.17–31.12.17	Staff on 31.12.17		
AFRICA	86	6	13	80	15	0	0	0	0	80	517
Algeria	2	1	0	3	0	0	0	0	0	3	20
Angola	0	0	0	0	0	0	0	0	0	0	1
Benin	4	0	1	3	1	0	0	0	0	3	8
Botswana	2	0	0	2	0	0	0	0	0	2	2
Burkina Faso	4	0	2	2	1	0	0	0	0	2	2
Burundi	1	0	0	1	0	0	0	0	0	1	3
Cabo Verde	0	0	0	0	0	0	0	0	0	0	3
Cameroon	4	0	1	3	0	0	0	0	0	3	25
Central African Republic	1	0	0	1	0	0	0	0	0	1	1
Chad	1	0	0	1	0	0	0	0	0	1	1
Comoros	1	0	0	1	0	0	0	0	0	1	1
Congo	0	0	0	0	0	0	0	0	0	0	1
Côte d'Ivoire	5	0	1	4	1	0	0	0	0	4	31
Democratic Republic of the Congo	1	0	0	1	0	0	0	0	0	1	11
Egypt	5	0	0	6	1	0	0	0	0	6	52
Eritrea	0	0	0	0	0	0	0	0	0	0	1
Ethiopia	3	1	0	4	1	0	0	0	0	4	42
Ghana	1	2	0	3	1	0	0	0	0	3	24
Guinea	2	0	0	2	1	0	0	0	0	2	2
Guinea-Bissau	1	0	0	1	1	0	0	0	0	1	1
Kenya	3	1	1	3	0	0	0	0	0	3	13
Lesotho	2	0	0	2	0	0	0	0	0	2	3
Liberia	0	0	0	0	0	0	0	0	0	0	1
Madagascar	1	0	0	1	0	0	0	0	0	1	34
Malawi	2	0	0	2	0	0	0	0	0	2	11
Mali	3	0	0	3	0	0	0	0	0	3	9
Mauritania	2	0	0	2	1	0	0	0	0	2	7
Mauritius	1	0	0	1	0	0	0	0	0	1	3
Morocco	0	0	0	0	0	0	0	0	0	0	14
Mozambique	0	0	0	0	0	0	0	0	0	0	5
Niger	2	0	0	2	1	0	0	0	0	2	2
Nigeria	1	0	0	1	1	0	0	0	0	1	15

Country of nationality by region	Professional and higher category										All categories of staff	
	Non-linguistic staff					Linguistic staff						Total
	(a)	(b)	(c)	(d)	(e)	(a)	(b)	(c)	(d)			
	Staff on 31.12.16	Recruited 01.01.17-31.12.17	Departures 01.01.17-31.12.17	Staff on 31.12.17	D staff and above	Staff on 31.12.16	Recruited 01.01.17-31.12.17	Departures 01.01.17-31.12.17	Staff on 31.12.17			
Rwanda	4	0	1	3	1	0	0	0	0	3	5	
Senegal	4	0	1	3	0	0	0	0	0	3	24	
Sierra Leone	0	1	0	1	0	0	0	0	0	1	2	
South Africa	5	0	1	4	1	0	0	0	0	4	26	
Sudan	1	0	0	1	0	0	0	0	0	1	2	
Tanzania, United Republic of	1	0	0	1	0	0	0	0	0	1	14	
Togo	2	0	1	1	0	0	0	0	0	1	1	
Tunisia	4	0	1	3	0	0	0	0	0	3	27	
Uganda	2	0	1	1	1	0	0	0	0	1	4	
Zambia	3	0	0	3	0	0	0	0	0	3	35	
Zimbabwe	5	0	1	4	1	0	0	0	0	4	28	
AMERICAS	171	7	11	171	20	3	0	0	3	174	496	
Argentina	15	0	1	14	3	0	0	0	0	14	27	
Bolivia, Plurinational State of	3	0	0	3	1	0	0	0	0	3	7	
Brazil	11	1	2	10	1	0	0	0	0	10	46	
Canada	19	0	0	21	2	0	0	0	0	21	45	
Chile	2	0	0	2	0	0	0	0	0	2	17	
Colombia	2	2	0	4	1	0	0	0	0	4	16	
Costa Rica	9	2	0	11	2	0	0	0	0	11	40	
Cuba	1	0	0	1	0	0	0	0	0	1	1	
Dominican Republic	1	1	0	2	1	0	0	0	0	2	4	
Ecuador	3	0	0	3	0	0	0	0	0	3	7	
El Salvador	2	0	0	2	0	0	0	0	0	2	4	
Guatemala	0	0	0	0	0	0	0	0	0	0	2	
Haiti	0	0	0	0	0	0	0	0	0	0	22	
Honduras	1	0	0	1	0	0	0	0	0	1	2	
Jamaica	1	0	1	0	0	0	0	0	0	0	0	
Mexico	9	1	1	9	0	1	0	0	1	10	22	
Nicaragua	0	0	0	0	0	0	0	0	0	0	10	
Panama	1	0	0	1	0	1	0	0	1	2	9	
Peru	12	0	2	10	0	0	0	0	0	10	60	
Suriname	0	0	0	0	0	0	0	0	0	0	1	
Trinidad and Tobago	3	0	0	3	1	0	0	0	0	3	17	
United States	71	0	4	69	8	1	0	0	1	70	106	
Uruguay	3	0	0	3	0	0	0	0	0	3	25	
Venezuela, Bolivarian Republic of	2	0	0	2	0	0	0	0	0	2	6	

Country of nationality by region	Professional and higher category										All categories of staff	
	Non-linguistic staff					Linguistic staff						Total
	(a)	(b)	(c)	(d)	(e)	(a)	(b)	(c)	(d)			
	Staff on 31.12.16	Recruited 01.01.17–31.12.17	Departures 01.01.17–31.12.17	Staff on 31.12.17	D staff and above	Staff on 31.12.16	Recruited 01.01.17–31.12.17	Departures 01.01.17–31.12.17	Staff on 31.12.17			
ARAB STATES	12	1	1	12	1	2	0	0	2	14	85	
Iraq	0	0	0	0	0	0	0	0	0	0	1	
Jordan	6	0	1	5	1	0	0	0	0	5	28	
Lebanon	5	1	0	6	0	2	0	0	2	8	49	
Syrian Arab Republic	1	0	0	1	0	0	0	0	0	1	4	
Yemen	0	0	0	0	0	0	0	0	0	0	3	
ASIA	111	4	6	111	14	4	0	0	4	115	851	
Afghanistan	1	0	0	1	0	0	0	0	0	1	17	
Australia	12	2	3	11	1	0	0	0	0	11	20	
Bangladesh	0	0	0	0	0	0	0	0	0	0	91	
Cambodia	0	0	0	0	0	0	0	0	0	0	58	
China	15	0	0	15	3	3	0	0	3	18	44	
Fiji	3	0	0	3	0	0	0	0	0	3	12	
India	11	0	0	11	1	0	0	0	0	11	53	
Indonesia	1	0	0	1	0	0	0	0	0	1	33	
Iran, Islamic Republic of	2	0	0	2	2	0	0	0	0	2	2	
Japan	33	1	1	34	4	0	0	0	0	34	56	
Korea, Republic of	6	0	0	8	1	0	0	0	0	8	14	
Lao People's Democratic Republic	1	0	0	1	0	0	0	0	0	1	7	
Malaysia	1	0	0	1	0	0	0	0	0	1	8	
Mongolia	2	0	0	2	0	0	0	0	0	2	8	
Myanmar	1	0	0	1	0	0	0	0	0	1	60	
Nepal	2	0	0	2	0	0	0	0	0	2	46	
New Zealand	2	0	0	1	1	0	0	0	0	1	4	
Pakistan	5	0	1	4	0	0	0	0	0	4	32	
Papua New Guinea	0	0	0	0	0	0	0	0	0	0	1	
Philippines	5	1	1	5	0	0	0	0	0	5	48	
Samoa	0	0	0	0	0	0	0	0	0	0	1	
Singapore	1	0	0	1	0	0	0	0	0	1	1	
Sri Lanka	1	0	0	1	0	0	0	0	0	1	27	
Thailand	5	0	0	5	1	1	0	0	1	6	74	
Timor-Leste	0	0	0	0	0	0	0	0	0	0	43	
Viet Nam	1	0	0	1	0	0	0	0	0	1	91	
EUROPE	341	19	15	351	52	24	0	4	20	371	1 001	
Albania	1	0	0	1	0	0	0	0	0	1	5	
Armenia	0	0	0	0	0	0	0	0	0	0	3	
Austria	1	0	0	1	0	0	0	0	0	1	2	

Country of nationality by region	Professional and higher category										All categories of staff	
	Non-linguistic staff					Linguistic staff						Total
	(a)	(b)	(c)	(d)	(e)	(a)	(b)	(c)	(d)			
	Staff on 31.12.16	Recruited 01.01.17-31.12.17	Departures 01.01.17-31.12.17	Staff on 31.12.17	D staff and above	Staff on 31.12.16	Recruited 01.01.17-31.12.17	Departures 01.01.17-31.12.17	Staff on 31.12.17			
Azerbaijan	0	0	0	0	0	0	0	0	0	0	1	
Belarus	1	0	0	1	0	0	0	0	0	1	2	
Belgium	14	1	0	15	5	0	0	0	0	15	25	
Bosnia and Herzegovina	1	0	0	1	1	0	0	0	0	1	7	
Bulgaria	3	1	0	4	1	0	0	0	0	4	4	
Croatia	2	0	0	2	0	0	0	0	0	2	2	
Czech Republic	1	0	0	1	0	0	0	0	0	1	1	
Denmark	8	0	0	8	3	0	0	0	0	8	13	
Estonia	1	0	0	1	0	0	0	0	0	1	1	
Finland	4	0	1	3	0	0	0	0	0	3	9	
France	68	8	5	72	4	6	0	1	5	77	296	
Georgia	0	1	0	1	0	0	0	0	0	1	4	
Germany	43	0	1	43	5	0	0	0	0	43	71	
Greece	5	0	0	5	1	0	0	0	0	5	9	
Hungary	2	0	0	2	1	0	0	0	0	2	21	
Ireland	5	0	0	5	0	0	0	0	0	5	20	
Israel	3	0	0	3	1	0	0	0	0	3	3	
Italy	43	2	4	43	9	0	0	0	0	43	65	
Kazakhstan	0	0	0	0	0	0	0	0	0	0	3	
Kyrgyzstan	0	0	0	0	0	0	0	0	0	0	6	
Latvia	0	0	0	0	0	0	0	0	0	0	1	
Lithuania	1	0	0	1	0	0	0	0	0	1	1	
Luxembourg	1	0	0	1	0	0	0	0	0	1	2	
Moldova, Republic of	1	0	0	1	0	0	0	0	0	1	8	
Montenegro	1	0	0	1	0	0	0	0	0	1	3	
Netherlands	17	0	0	19	2	0	0	0	0	19	30	
Norway	5	1	0	6	1	0	0	0	0	6	9	
Poland	1	0	0	1	0	0	0	0	0	1	2	
Portugal	8	0	0	8	1	0	0	0	0	8	21	
Romania	5	0	0	5	0	0	0	0	0	5	5	
Russian Federation	4	0	0	4	0	1	0	0	1	5	33	
Serbia	2	0	0	2	0	0	0	0	0	2	7	
Slovakia	1	0	0	1	0	0	0	0	0	1	1	
Slovenia	1	0	0	1	0	0	0	0	0	1	1	
Spain	30	1	0	31	6	5	0	0	5	36	60	
Sweden	5	0	0	5	1	1	0	0	1	6	16	
Switzerland	11	0	2	9	0	2	0	0	2	11	74	
Tajikistan	0	1	0	1	0	0	0	0	0	1	5	

Country of nationality by region	Professional and higher category										All categories of staff
	Non-linguistic staff					Linguistic staff				Total	
	(a)	(b)	(c)	(d)	(e)	(a)	(b)	(c)	(d)		
Staff on 31.12.16	Recruited 01.01.17-31.12.17	Departures 01.01.17-31.12.17	Staff on 31.12.17	D staff and above	Staff on 31.12.16	Recruited 01.01.17-31.12.17	Departures 01.01.17-31.12.17	Staff on 31.12.17			
The former Yugoslav Republic of Macedonia	1	0	0	1	0	0	0	0	0	1	3
Turkey	6	0	0	6	1	0	0	0	0	6	25
Ukraine	4	0	1	3	0	0	0	0	0	3	10
United Kingdom	30	3	1	32	9	9	0	3	6	38	109
Uzbekistan	0	0	0	0	0	0	0	0	0	0	2
Other total	0	0	0	0	0	0	0	0	0	0	2
Other	0	0	0	0	0	0	0	0	0	0	2
Grand total	721	37	46	725	102	33	0	4	29	754	2 952

Table V. Unrepresented nationalities on non-linguistic posts as at 31 December 2017

The following 68 member States were unrepresented on non-linguistic posts as at 31 December 2017.

Angola *	Libya
Antigua and Barbuda	Maldives, Republic of
Armenia *	Malta
Azerbaijan *	Marshall Islands
Bahamas	Morocco *
Bahrain	Mozambique *
Bangladesh *	Namibia
Barbados	Nicaragua *
Belize	Oman
Brunei Darussalam	Palau
Cabo Verde *	Papua New Guinea *
Cambodia *	Paraguay
Congo *	Qatar
Cook Islands	Saint Kitts and Nevis
Cyprus	Saint Lucia
Djibouti	Saint Vincent and the Grenadines
Dominica	Samoa *
Equatorial Guinea	San Marino
Eritrea *	Sao Tome and Principe
Gabon	Saudi Arabia
Gambia	Seychelles
Grenada	Solomon Islands
Guatemala *	Somalia
Guyana	South Sudan
Haiti *	Suriname *
Iceland	Swaziland
Iraq *	Timor-Leste *
Jamaica	Tonga
Kazakhstan *	Turkmenistan
Kiribati	Tuvalu
Kuwait	United Arab Emirates
Kyrgyzstan *	Uzbekistan *
Latvia *	Vanuatu
Liberia *	Yemen *

* 24 member States have at least one national among other staff categories (i.e. technical cooperation or General Service/National Officer categories).

Table VI. Composition of staff newly appointed between 1 January and 31 December 2017 in the Professional category and above (regular staff)

Total recruitment: 37

(a) Non-linguistic staff subject to geographical distribution: 37

Less than adequate ⁽ⁱ⁾		Adequate ⁽ⁱⁱ⁾		More than adequate ⁽ⁱⁱⁱ⁾	
Country	Total	Country	Total	Country	Total
Brazil	1	Australia	2	Algeria	1
Japan	1	Dominican Republic	1	Belgium	1
		Georgia	1	Bulgaria	1
		Mexico	1	Colombia	2
		Norway	1	Costa Rica	2
		Sierra Leone	1	Ethiopia	1
		Tajikistan	1	France	8
		United Kingdom	3	Ghana	2
				Italy	2
				Kenya	1
				Lebanon	1
				Philippines	1
				Spain	1
Total	2	Total	11	Total	24

⁽ⁱ⁾ Number of officials recruited from member States with less than the adequate number of nationals on the staff at the end of 2017.

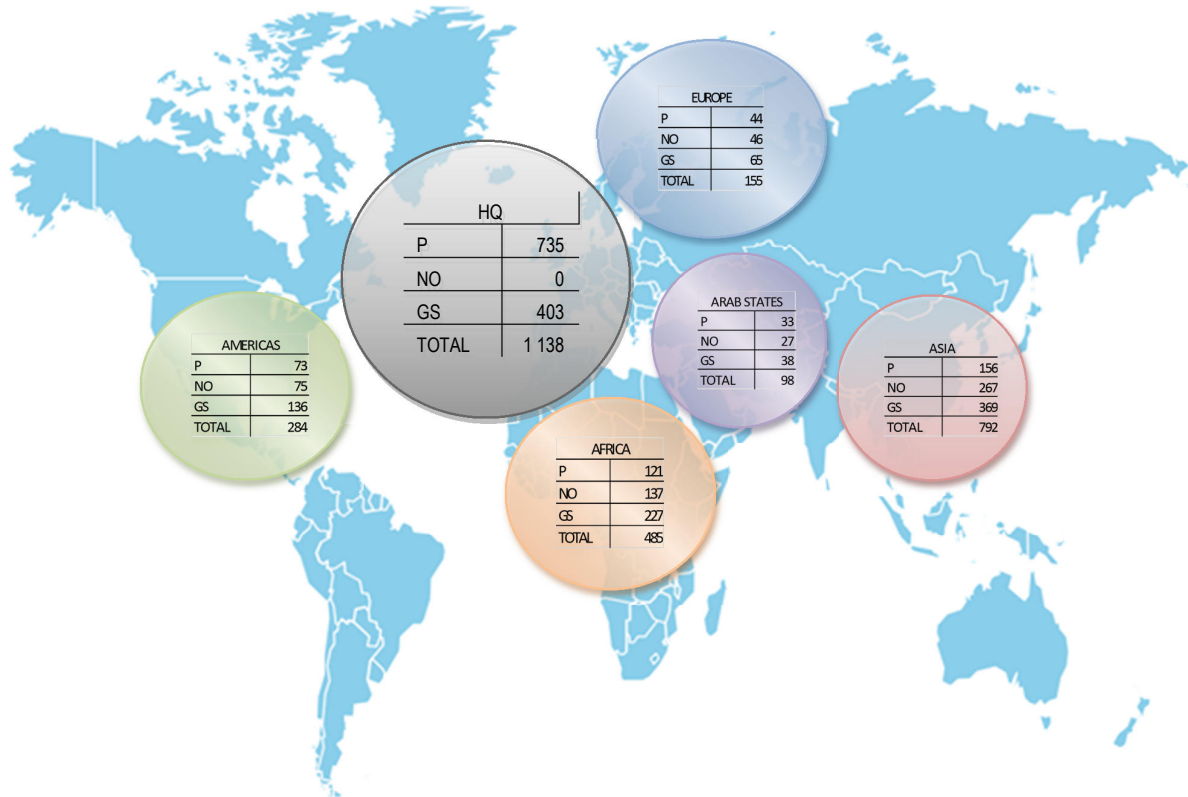
⁽ⁱⁱ⁾ Number of officials recruited from member States with an adequate number of nationals on the staff at the end of 2017.

⁽ⁱⁱⁱ⁾ Number of officials recruited from member States with more than an adequate number of nationals on the staff at the end of 2017.

(b) Linguistic staff not subject to geographical distribution: 0

Part V. ILO presence

Table VII. ILO presence by duty station as at 31 December 2017
(all categories of staff)



Region		Regular Staff						Technical Cooperation Staff						Total
		GS		NO		P		GS		NO		P		
Country	Duty Station	F	M	F	M	F	M	F	M	F	M	F	M	
AFRICA		64	58	18	17	24	43	50	55	42	60	18	36	485
Algeria	Algiers	4	1	1	1		2	3	2	2	2		1	19
Benin	Cotonou									1				1
Cameroon	Yaounde	5	7	1	2	2	5	1		1	2			26
Cabo Verde	Praia									2		1	1	4
Congo, Democratic Republic of the	Kinshasa	1	4		2	2								9
Cote d'Ivoire	Abidjan	9	8	2	3	4	8	3	2	1	3	1	2	46
Egypt	Cairo	5	4	3		3	5	9	6	5	5	3	2	50
	Hurghada							1						1
	Minya							1	1					2
	Port Said								2					2
Ethiopia	Addis Ababa	9	6	2	1		2	1	7	2	3	5	1	39
Ghana	Accra							3	4	2	3			12

Region		Regular Staff						Technical Cooperation Staff						Total	
		GS		NO		P		GS		NO		P			
Country	Duty Station	F	M	F	M	F	M	F	M	F	M	F	M		
Kenya	Nairobi									3	1			4	8
Lesotho	Maseru									1					1
Liberia	Monrovia										1				1
Madagascar	Antananarivo	3	4	3		1	1	3	6	3	4				28
	Sambava								2		3			1	6
Malawi	Lilongwe							1	2		4	1	1		9
Mali	Bamako							2	1		3				6
Mauritania	Nouakchott							1	1		3			3	8
Morocco	Oujda										1				1
	Rabat							2	3	4	2			1	12
Mozambique	Maputo							1	1		3			4	9
Nigeria	Abuja	3	6	2	1		2			1				1	16
Senegal	Dakar	7	6		2	5	8	2	1		3	1	1		36
South Africa	Bisho													1	1
	Pietermaritzburg													1	1
	Polokwane													2	2
	Pretoria	8	2	1	2	6	8	2		1		3	4		37
Sudan	Nyala										1				1
Tanzania, United Republic of	Dar es Salaam	4	4	1	1		1				2				13
Tunisia	Siliana										1				1
	Tunis							6	6	3	7	1			23
Uganda	Kampala									1	1				2
Zambia	Kaoma								1						1
	Lusaka	2	3		1		1	7	5	8	2	1		5	35
Zimbabwe	Harare	4	3	2	1	1		1	2	1		1			16
AMERICAS		70	18	23	12	17	45	30	18	25	15	7	4		284
Argentina	Buenos Aires	3	2	3		1	2	1							12
Bolivia, Plurinational State of	La Paz							2			1				3
Brazil	Brasilia	4	1	1	4	2	1	2	2	6	3				26
	Sao Paulo										1				1
Chile	Santiago	10	1	2	2	2	7								24
Colombia	Bogota						1	3		1					5
Costa Rica	San Jose	16	3	2	2	2	7	3		2					37
Dominican Republic	Santo Domingo									1					1
Ecuador	Quito										1				1

Region		Regular Staff						Technical Cooperation Staff						Total
		GS		NO		P		GS		NO		P		
Country	Duty Station	F	M	F	M	F	M	F	M	F	M	F	M	
El Salvador	San Salvador							1						1
Guatemala	Guatemala City						1			1	1			3
Haiti	Les Cayes								2	1			1	4
	Port au Prince							4	7	4	3	2	1	21
Mexico	Mexico City	4		3		1	1	1						10
Nicaragua	Managua							2	1	4	3			10
Panama	Panama City							2	3	1	1		1	8
Paraguay	Asuncion												1	1
Peru	Lima	17	6	8	1	4	13	5	1	3	1	4		63
Trinidad and Tobago	Port of Spain	9	1	3		3	6	2						24
United States	New York	1	1			2	2							6
	Washington	2					1					1		4
Uruguay	Montevideo	4	3	1	3		3	2	2	1				19
ARAB STATES		11	4	3	1	7	11	8	13	10	12	5	9	94
Jordan	Amman						1	1	3	6	5	2	2	20
	Irbid								1		2		1	4
	Mafraq								1				1	2
Kuwait	Kuwait	1												1
Lebanon	Beirut	10	4	3		7	10	6	7	4	4	3	3	61
United Arab Emirates	Dubai							1					1	2
Yemen	Sanaa				1				1		1		1	4
ASIA		81	56	27	17	28	44	115	117	123	100	32	52	792
Afghanistan	Kabul		4	1	1		1		1		1		1	10
	Mazar-I-Sharif							2	3		2		1	8
Bangladesh	Dhaka	3	4	1	3		2	10	21	19	28	3	12	106
Cambodia	Phnom Penh		1		1			14	9	15	13	5		58
China	Beijing	6	2	2	1	1	2	2		3	1			20
Fiji	Suva	3	4	1	1		2		1					12
India	New Delhi	7	7	4		4	10	4	2	3			1	42
Indonesia	Bandung								1					1
	Jakarta	5	3	2	2	1		6		4	6	4	2	35
	Surabaya								1					1
Japan	Tokyo	4			1	1								6
Lao People's Democratic Republic	Savannakhet							1			1			2
	Vientiane							1		1	2		1	5

Region		Regular Staff						Technical Cooperation Staff						Total
		GS		NO		P		GS		NO		P		
Country	Duty Station	F	M	F	M	F	M	F	M	F	M	F	M	
Malaysia	Kuala Lumpur							1	1	2	1	2	1	8
Mongolia	Ulan Bator							1		2				3
Myanmar	Aunglan								1					1
	Dawei								1					1
	Hakha								1					1
	Mandalay							1						1
	Mawlamyine								1					1
	Nay Pyi Taw							2	2					4
	Taunggyi							1	1	1				3
	Yangon		2	7	2		1	1	14	8	8	4	5	5
Nepal	Butwal							1	1		1			3
	Hetauda							1	1		1			3
	Kathmandu	2	4	3	1		1	7	9	1	7		1	36
Pakistan	Islamabad	3	6		4	2			5	1	3	1		25
	Lahore								2	1	1			4
	Peshawar										1			1
Papua New Guinea	Port Moresby									1			1	
Philippines	Manila	9	1	2			2	6	1	6	4			31
Samoa	Apia										1			1
Sri Lanka	Batticaloa								2		2			4
	Colombo	4	4	2		1		2		3		1		17
	Kilinochchi								4		1			5
Thailand	Bangkok	29	8	6		16	22	11	1	9	1	7	10	120
	Phang Nga							1		1				2
Timor-Leste	Aileu								1					1
	Ainaro								1					1
	Baucau							1	5				2	8
	Dili							7	15	1		2	9	34
	Emera								1					1
	Lospalos								1					1
	Maliana								4				1	5
	Oecusee								1					1
	Same								4				1	5
	Suai								1					1
Viet Nam	Hanoi	4	1	1	2	1	1	15	1	19	9	1	3	58
	Ho Chi Minh City							6	1	21	7	1	1	37

Region		Regular Staff						Technical Cooperation Staff						Total
		GS		NO		P		GS		NO		P		
Country	Duty Station	F	M	F	M	F	M	F	M	F	M	F	M	
EUROPE		268	123	10	8	288	297	64	15	25	4	90	105	1 297
Albania	Tirana			1				1						2
Armenia	Yerevan			1				1		1				3
Azerbaijan	Baku				1									1
Belgium	Brussels	3				3								6
Bosnia and Herzegovina	Sarajevo			1				2		2	1	1		7
France	Paris	1					1							2
Georgia	Tbilisi							1	1	1			1	4
Germany	Berlin	1				1	1							3
Greece	Athens							1		1				2
Hungary	Budapest	9	2	1		3	4	4						23
Israel	Jerusalem	1	1	1			1							4
Italy	Rome		1				1					1	3	6
	Turin						1					1	1	3
Kazakhstan	Astana				1			1						2
Kosovo *	Pristina									1				1
Kyrgyzstan	Bishkek				1			1	1	3				6
Macedonia, the former Yugoslav Republic of	Skopje				1			1						2
Moldova, Republic of	Chisinau			1				2		1				4
Montenegro	Podgorica							1		1				2
Portugal	Lisbon					1						1		2
Russian Federation	Moscow	7	2	3	1	1	6	8		1		1	2	32
Serbia	Belgrade				1			1		1				3
Spain	Madrid						1							1
Switzerland	Geneva	245	116			279	280	31	11			82	94	1 138
Tajikistan	Dushanbe				1			1		1			1	4
Turkey	Ankara	1	1	1			1	4		8	3	1		20
	Gaziantep								1					1
Ukraine	Kiev				1			1	1	3			1	7
Uzbekistan	Tashkent							2				2	2	6
Total		494	259	81	55	364	440	267	218	225	191	152	206	2 952

* In the meaning of the United Nations Security Council Resolution 1244 (1999).