



TOP STORIES



ILO, Tokyo 2020 sign agreement to promote decent work in run-up to the Games

On 26 April 2018, the [ILO](#) and the [Tokyo 2020 Organising Committee of the Olympic and Paralympic Games \(Tokyo 2020\)](#) signed a [partnership agreement](#) aimed at promoting sustainability through the Tokyo 2020 Games. The agreement focuses on advancing socially responsible labour practices among the Games'

delivery partners (sponsors, suppliers, and licensees). Using the MNE Declaration as a framework, the partnership envisages the following collaborative activities: awareness raising on the labour dimension of corporate social responsibility through the organization of events such as the Sustainability Forum ([2017](#), [2018](#)); collection and dissemination of good practices among the Games' delivery partners on socially responsible labour practices; technical seminars, workshops and roundtables to enhance capacities of the Games' delivery partners in advancing decent work; and development or dissemination of tools in support of the same partners in implementing socially responsible labour practices.

Adoption of the guidelines concerning statistics of cooperatives and future work

On 18 October 2018, the Guidelines concerning Statistics of Cooperatives were adopted at the 20th International Conference of Labour Statisticians (ICLS). The delegates from across regions as well as workers' and employers' delegates voted for the adoption of the guidelines at the ILO Headquarters in Geneva. In their comments, the delegates underlined the importance of developing reliable and globally comparable statistics of cooperatives. A number of country representatives also echoed their support for conducting pilot-testing of the Guidelines and expressed their willingness to participate in the process. [More](#). Thirteen country briefs on the current status of statistic of cooperatives (Canada, Russian Federation, the United Kingdom, the Philippines, Brazil, Mainland Tanzania, Islamic Republic of Iran, Japan, Turkey, the Republic of Korea, Costa Rica, Indonesia, and Australia) were produced in view of the 20th ICLS.



PROJECT NEWS

Nexus Dialogue on “Greening with Jobs: A Just Transition to Sustainability” held in partnership with the United Nations Environment Management Group



This Dialogue brought together government representatives, UN officials, researchers and policy makers, and innovative financing experts to discuss Just Transition. Participants highlighted the importance of implementing the Just Transition guidelines to achieve the 2030 Agenda and the commitments under the Paris Agreement, lessons learned in the application of Just Transition in Argentina, Fiji, France and Poland, the relevance of Just Transition for policy frameworks and the work of international organizations, and innovative financing mechanisms to support the implementation of Just Transition. [More](#)

Empowering and enhancing resilience of Sierra Leonean women cross border traders within the Mano River Union (MRU) through learning and experience sharing with the East African Community (EAC)



ILO is serving as an intermediary between EAC and MRU to enable exchanges of good practices in supporting women cross borders traders. Lack of information being recognised as one of the main non-tariff barriers to women cross border traders, ILO is helping MRU to adapt the “[Simplified Guide for Micro and Small-Scale Women Cross Border Traders and Service Providers within the East African Community](#)” into the MRU context. The overall objective of the project is to contribute to women’s economic empowerment and resilience in

Sierra Leone via the promotion of interregional trade and economic cooperation within the MRU, building on evidence-based learning from the EAC. Find out more on this [blog](#).

Strengthened partnership with the EU under the Partnership Instrument:

- a) “[Responsible Supply Chains in Asia](#)”, jointly implemented by the ILO and the OECD, covers six countries in Asia ([China](#), [Japan](#), Myanmar, [the Philippines](#), Thailand and Viet Nam) aims at advancing sustainable and inclusive growth by encouraging businesses to adopt policies and practices in the areas of human and labour rights and environmental protection standards in line with international instruments, including the MNE Declaration.
- b) The “[WE Empower: Promoting women’s economic empowerment at work through responsible business conduct \(RBC\) in G7 countries](#)” project, jointly implemented by ILO and UN-Women, aims to support sustainable, inclusive and equitable economic growth by promoting women’s economic empowerment in public and private sector in G7 countries. The project’s specific objectives are to facilitate dialogue and exchanges amongst G7 countries public and private sectors, and to further engage with the private sector in the elimination of gender inequality faced by women in the world of work.
- c) A third project to promote RBC in Latin America will start in 2019 covering 9 countries (Argentina, Brazil, Chile, Colombia, Costa Rica, Ecuador, Mexico, Panama and Peru).

Economic Empowerment for Rural Women project (Projet d'appui à l'Autonomisation des Femmes Rurales)

ILO has received CAD 3,000,000 from the Government of Canada to support women entrepreneurs in rural areas in Tunisia as a means to close the gender gap in the labour market and contribute to economic growth in the country. The three-year project will start on 1 January 2019 and will work towards: (1) capacity building of potential and existing women entrepreneurs through entrepreneurship trainings, coaching and access to finance; (2) advocacy for enabling mechanisms for a conducive business environment in favour of women entrepreneurs in rural areas. Contact wed@ilo.org for more information.

Cooperatives to Strengthen Youth Empowerment and Employment Readiness among Vulnerable, Marginalised and At-Risk Groups



Young people in Cambodia and the Lao People's Democratic Republic face specific challenges in accessing the labour market. For those in employment, many are in poor quality and low-paid jobs. The Japan-funded project aims to build institutional capacities to deliver innovative and value-added services with a special focus on employment readiness/foundational skills empowerment, and cooperative development for marginalized and at-risk youth. [More](#)

Empowering and enhancing resilience of Sierra Leonean women cross border traders within the Mano River Union (MRU) through learning and experience sharing with the East African Community (EAC)



ILO is serving as an intermediary between EAC and MRU to enable exchanges of good practices in supporting women cross borders traders. Lack of information being recognised as one of the main non-tariff barriers to women cross border traders, ILO is helping MRU to adapt the "[Simplified Guide for Micro and Small-Scale Women Cross Border Traders and Service Providers within the East African Community](#)" into the MRU context. The overall objective of the project is to contribute to women's economic empowerment and resilience in

Sierra Leone via the promotion of interregional trade and economic cooperation within the MRU, building on evidence-based learning from the EAC. Find out more on this [blog](#).

Development of ApexFinCoop training programme

In partnership with the Food and Agriculture Organization (FAO) and the International Training Centre of the ILO (ITC-ILO), the ILO has developed ApexFinCoop, a training and strategic planning programme that specifically focuses on apex organizations of financial cooperatives. The ApexFinCoop training package comprises four themes: 1) Specificity of financial cooperatives and role of apexes; 2) Business model, products and services; 3) Sustainability and risk management; and 4) Enabling environment and advocacy. Following the [first pilot test with the Ghana Credit Unions Association](#) in December 2017, another roll-out is being planned in other African countries such as Uganda, Eswatini, Nigeria, Cameroun, Zimbabwe, and Rwanda during the first half of 2019.



Research project on financial mechanisms for innovative social and solidarity economy ecosystems



Supported by the Ministry of Labour, Employment and Social and Solidarity Economy of the Government of the Grand Duchy of Luxembourg, this project aims at fostering a better understanding of the global ecosystems, i.e. the relations and interactions between a number of social and solidarity economy (SSE) stakeholders favouring SSE, and the financial mechanism that supports and consolidate them. The project will

cover one to two countries per continent (Latin America, Europe, Asia, and Africa), some of which are part of the International Leading Group on Social and Solidarity Economy (ILGSSE). The final research paper will be available in June 2019. [More](#)

Social Finance and Prudential Foundation partner to develop inclusive insurance markets and stimulate innovation in Asia and Latin America



Social Finance and [The Prudential Foundation](#) are proud to announce a [partnership](#) to strengthen the resilience to risk for low-income populations in

Asia and Latin America. Through the partnership, Social Finance will stimulate product innovation in Asia, where it will support the development of better risk-management solutions for low-income households and small enterprises. The project will also facilitate the development of inclusive insurance markets in two Latin American countries, where the ILO will build the capacity of, and facilitate a knowledge exchange among, key stakeholders to overcome the barriers to serving emerging consumers.

New training programme: “Financial education: Programme design and implementation for policymakers and practitioners”

This year saw the launch of a brand new course: “Financial education: Programme design and implementation for policymakers and practitioners.” It draws on more than 15 years’ experience in financial education at the ILO, ITCILO, as well as other leading global agencies. [Click here](#) to find out about the work we do on financial education and the successful first edition of the training programme.



New ILO SCORE / ETI initiative for suppliers



ILO SCORE & ETI: ILO and Ethical Trading Initiative (ETI) bring SCORE Training to suppliers of international brands, cooperating to improve the productivity, competitiveness and sustainability of Small and Medium Enterprises (SMEs) in Guangzhou City, Guangdong Province and Shanghai. ILO and ETI reflect on their first year jointly implementing SCORE Training in Chinese SMEs [here](#). Case studies from the partnership so far can be found [here](#) and [here](#).

Also in China, the SCORE programme continues to improving workplace compliance, fostering a preventive OSH culture working with Ministry of Emergency Management (MEM). [Read more](#).

COUNTRY HIGHLIGHTS

Cambodia

On 21 September 2018, the ILO, together with the Cambodia Ministry of Education, Youth and Sport and UN Volunteers, organized Cambodia Entrepreneurship Day (CED), a country-wide introduction to entrepreneurship for youth. Run simultaneously in all 25 provinces using an activity-based training approach, the programme reached over 4,300 young people around the country – boosting visibility of entrepreneurship as a livelihood option and of the ILO's work to support youth. Implemented with support of the ILO/Japan Fund for Building Social Safety Nets in Asia and the Pacific (SSN Fund), partners are exploring establishing CED as an annual event. [More](#)

China



The [23rd World Investment Conference](#) under the theme “A New Area in Foreign Direct Investment” was organised by the World Association of Investment Promotion Agencies (WAIPA) and hosted by the Chinese Investment Promotion Agency and Chinese Ministry of Commerce. It coincided with the 20th anniversary of the CIFIT (China International Fair for Investment and Trade). The members of WAIPA's Consultative Committee (ILO, OECD, UNCTAD, UNIDO, World Bank) organized a workshop for participating IPAs during

which Githa Roelans made a presentation on “A New Era in Foreign Direct Investment: Strategic thinking for greater quality job creation”. Githa Roelans also addressed the panel on Domestic Value Addition the opportunities for decent work provided by impact investment. The ILO participation in the WIC is part of the broader [collaboration between ILO and WAIPA](#) on the SDGs.



Indonesia

Early in September 2018, the ILO and UNHCR, with support from ITC Turin and the William Davidson Institute at University of Michigan, jointly launched a new livelihoods pilot initiative offering learning opportunities to 100 refugees and local youth in Jakarta, Indonesia. The newly developed six-month entrepreneurship training programme, *Ready for Business*, based on an activity-based training model, aims to improve refugees' and local youths' capacity for sustained self-reliance. Imparted weekly through 2-3 hour peer learning sessions supported by Atma Jaya Catholic University of Indonesia and Dompot Dhuafa, the programme also incorporates psycho-social well-being and community-supported networking activities. If proven effective, this pilot initiative will be adapted and replicated elsewhere in cooperation with UNHCR. Follow [@ILO_R4B](#) on Twitter for more updates.

Laos

The ILO *In Business* learning programme, designed to support enterprises' development, growth and enhancement, has made its way to the Lao PDR. The 'Laos In Business' Financial Management and Business Planning Modules have been tailored to meet the needs of SMEs and financial institutions in Laos to increase SME access to finance. 'Laos in Business' has been received with enthusiasm from government, commercial banks, private sector and BDS providers, setting the foundation for integrated SME services, under a delivery mechanism with full cost recovery. See project [factsheet](#).

Senegal

[Senegal](#) became the first country in Africa to appoint four national focal points responsible for the promotion and application of the MNE Declaration such national focal points. Earlier this year, Senegal already made history by creating the first tripartite Commission to promote the MNE Declaration within a national social dialogue institution. **Côte d'Ivoire** has also appointed national focal points for the promotion of the MNE Declaration. After Portugal and Senegal, Côte d'Ivoire is the third country to make such an appointment. The Côte d'Ivoire national focal points will launch their joint national action plan during first “National Forum on the Promotion of the MNE Declaration” in December 2018. Côte d'Ivoire and Senegal both benefit from the project “Enterprises and Decent Work” financed by France. The project has trained and sensitized more than 200 national actors on the revised MNE Declaration, its principles and operational tools.

Vietnam

“[Strengthening home-host country policy dialogue to maximize decent work impact of the FDI/MNEs in Viet Nam](#)” was organized by Viet Nam Chamber of Commerce and Industry and the ILO with the support of the Government of Japan as part of the [MNED project in the electronics Sector](#). The first home-host country policy dialogue to maximize the decent work impact of the FDI/MNEs was attended by over 100 stakeholders of the Vietnamese electronics industry as well as representatives of the government, employers and workers organisations of the investor country. The panel highlighted the achievements of the [CSR Business Coalition in the electronic sector](#) and confirmed the need for continuous dialogue involving MNEs in advancing decent work. More info click [here](#).



FRESH OFF THE NEW PRESS / KNOWLEDGE

Overview of recent enterprise formalisation initiatives in Africa



Two billion people in the global workforce are in the informal economy and over 80% of economic units across the world are informal. This phenomenon is predominant in Africa, notably in the sub-Saharan region, where 71.9% of jobs (excluding agriculture) are informal. The ILO Recommendation 204 concerning the Transition from the Informal to the Formal Economy testifies the commitment of the ILO. In Africa, a number of policies and programmes have been designed and implemented with the aim of promoting enterprise formalization, but little is documented. This report, which has been produced by the Decent Work Team in Yaoundé in collaboration with the SME Unit's EESE Team, reviews the main initiatives on enterprise formalization in Africa and provides a set of best practices and recommendations to foster transitions towards the formal economy in the region. Report is [here](#).

A new toolset for participatory cooperative development



ILO Bangkok and COOP have jointly developed a new toolset for cooperative training by drawing on technical content from existing ILO cooperative training tools and peer-to-peer, activity based learning methodology from the ILO's Community-Based Enterprise Development (C-BED) programme. The toolset is open to anyone interested in cooperatives and particularly relevant for workers in the rural and informal economies. It consists of three elements:

- [Think.COOP](#) to capture the concept of cooperation, importance of relationships and basics of the cooperative principles and business model;
- [Start.COOP](#) for launching a cooperative in a participatory manner; and
- [Manage.COOP](#) for assisting democratic management of a cooperative in line with the internationally agreed cooperative values and principles (to be launched in December 2018).

10 years of Impact Insurance!



The ILO's Impact Insurance Facility is celebrating its [10-year anniversary](#) in 2018! We are proud of our decade-long journey to enable the insurance sector, governments and their partners to reduce households' vulnerability, promote stronger enterprises and facilitate better public policies. Throughout 2018, we have shared lessons and experiences from the past, examined the current trends, and presented ideas for the

future. Some highlights include the organization of the [Impact Insurance Academy](#), a unique opportunity to learn how insurance contributes to social and economic development based on the experiences of leading companies. We also organized a [video contest](#) where we invited current and former partners to share their own journeys of the last decade – with [stunning results](#)!

New website on the MNE Declaration!

The previous MNE Declaration webpage has been revamped into an entry page on [the MNE Declaration and its operational tools](#):

- the text and annexes of the MNE Declaration in 12 languages overview of the references made to the ILO MNE Declaration in different policy frameworks (inside and outside the ILO, including references to the MNE Declaration in G7 and G20 Declarations and policies adopted by regional organisations)
- partnerships
- resources and policy briefs
- training opportunities, including the update e-learning **Business and Decent Work – an introduction to the MNE Declaration** (www.ilo.org/mnelearning)
- country case studies and development cooperation projects

Blog: Step By Step to Formalization

Over the last few years, the Enterprises Department has intensified its efforts to document promising practices to formalize enterprises and their workers. This work has taken place in the context of ILO Recommendation 204 on the Transition from the Informal to the Formal Economy, which was adopted in 2015. A Global Knowledge Sharing Event on Enterprise Formalization, that took place in Manila in July 2018, is one example of a series of events organized by the department in collaboration with field offices and ITC-ILO to identify and document promising practices and innovations in this area. The EESE team of the SME Unit has produced a [blog](#) which provides some entry points to smoothen the path to formality for micro and small enterprises across the world.

New SCORE training model for supply chain development

The SCORE programme has launched a new training model for supply chain development: Gender Equality Model (Modelo de Igualdad de Género) or MIG SCORE. MIG SCORE focuses on five key issues: voice equality, inclusive hiring, equal pay for work of equal value, work climate, and work-life harmony. Taking into account the managerial and financial realities of SME's, the eight-month training and technical assistance is divided into four steps, including a baseline assessment, manager-worker training, development of an Enterprise Improvement Plan (EIP) and expert enterprise visits to provide support and advice. See [ILO blog post and video](#) or, more descriptive but a bit older https://www.ilo.org/empent/whatsnew/WCMS_631091/lang--en/index.htm

Transforming our world: A cooperative 2030 series



The ILO as the current chair of the Committee for the Promotion and Advancement of Cooperatives (COPAC) has been coordinating the production of a series of 17 briefs, one for each Sustainable Development Goal (SDG), in order to raise awareness about the contributions of cooperative enterprises towards achieving the 2030 Agenda in a sustainable, inclusive and responsible way. To date 11 briefs have been completed.

[More](#)

Enabling environment for sustainable enterprises in Zimbabwe

On 15th of November 2018, the [final report](#) describing an assessment of the enabling environment for sustainable enterprises (ESEE) in Zimbabwe was successfully launched in Harare, in the presence of high-level policy makers and the media.

Applying the ILO ESEE methodology, the conclusions presented in the report highlighted constraints for enterprise creation and growth. The action plan with specific outputs stemming from outcomes linked to priority areas and key players for action will next be finalized and adopted following the launch of the ESEE report.



New GET-Ahead materials are ready!

Gender and Entrepreneurship Together (GET Ahead) training programme aims at addressing different barriers women face in starting and running a business (lack of knowledge, lack of skills, low confidence, family expectations and responsibilities, etc.) and bridge the gender gap by offering them business management skills as well as soft skills. New materials have embedded coaching and peer-to-peer support to improve the learning experience. They also contain additional readings on prevention of gender-based violence and provision of childcare as to

maximize participation of women in training and post-training activities. More on www.ilo.org/wed

Public policies for social and solidarity economy: two reports, one assessing progress in seven countries and one on Social and solidarity economy and the Future of Work



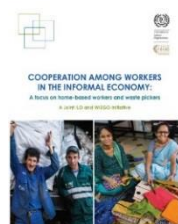
The first report provides a comparative analysis of seven ILO case studies on the public policies for social and solidarity economy (SSE) in Brazil, Costa Rica, Nicaragua, the Philippines, South Africa, the Republic of Korea and Italy in terms of key instruments, achievements and limitations. Different pathways are identified and four specific challenges related to state capacity, policy coherence, participation and sustainability are examined. [More](#) The second report presents the main theoretical arguments and empirical evidence on the features and role of social and solidarity economy (SSE) organizations, specifically on its potential to create and sustain decent work opportunities in changing world of work. [More](#)

Strengthening management capacities of agricultural cooperatives



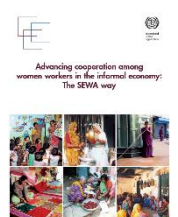
This briefing note provides highlights on the use of My.COOP – Managing your agricultural cooperative training package during its first five years. The note is based on a stocktaking exercise, which aimed to understand where, how and by whom My.COOP has been used, and provides a set of recommendations for the future use of the materials and approaches of delivery. [More](#)

Cooperation among workers in the informal economy: A focus on home-based workers and waste pickers



The report sets forth the current challenges, opportunities, and practices among cooperatives and other social and solidarity economy (SSE) organizations of waste pickers and home-based workers in order to inform future actions and interventions that support cooperative development. It is part of a joint ILO and Women in Informal Employment: Globalizing and Organizing (WIEGO) initiative aimed at understanding the nature and scope of cooperatives and other social and solidarity economy organizations formed by workers in the informal economy. [More](#)

Advancing cooperation among women workers in the informal economy: The SEWA way



This report aims to provide an understanding of the challenges and opportunities for cooperatives and other SSE units in empowering women workers in the informal economy, with a specific focus on SEWA's experience. It is based on individual interviews and focus group discussions with select cooperative leaders and members and also uses select studies presenting the forty-year experience of SEWA with cooperatives. [More](#)



Social Finance Working Paper: Financial inclusion and health

Developing solutions that address ill health can be a triple win for clients, society and financial service providers. Keeping clients and their families healthy makes business sense, but while there is great demand for such solutions, only a few providers have focussed on tackling health challenges. [This paper](#) includes case studies and outlines the scope for financial service providers to develop holistic health solutions.

A new SCORE training model for supply chain development



The SCORE programme has launched a new training model for supply chain development: Gender Equality Model (Modelo de Igualdad de Género) or MIG SCORE. MIG SCORE focuses on five key issues: voice equality, inclusive hiring, equal pay for work of equal value, work climate, and work-life harmony. Taking into account the managerial and financial realities of SME's, the eight-month training and technical assistance is divided into four steps, including a baseline assessment, manager-worker training, development of an Enterprise Improvement Plan (EIP) and expert enterprise visits to provide support and advice. [ILO blog post and video](#)

UPCOMING EVENTS

The 3rd PAGE Ministerial Conference

The Partnership on Green Economy (PAGE) is organizing its 3rd International Conference in Cape Town, South Africa, on 10-11 January. Under the topic “Advancing Inclusive and Sustainable Economies”, the Conference will gather approximately 500 delegates to participate in a robust discussion on tools and strategies for shaping greener economies to achieve the objectives of the 2030 Agenda for Sustainable Development and the Paris Agreement on Climate Change. Visit the event website [here](#).

ILO-ICA joint event on cooperatives and the future of work

The ILO and the International Cooperative Alliance (ICA) will organize a one-day event on 24 June 2019 at the ILO Headquarter in Geneva on the occasion of the signing of an updated memorandum of understanding (MoU) between the two institutions. The event will focus on cooperative responses to the changing world of work.

WEBINARS

Webinar: “Innovative Finance: Why should we care?”

Throughout October, a series of webinars on “Innovative Finance: Why should we care?” was organised for ILO colleagues in the regions by Enterprises’ Social Finance and PARDEV who, since late 2017, have jointly worked towards better understanding on financial solutions and mechanisms that create scalable and effective ways of channelling both private money and public resources towards meeting the 2030 Agenda for Sustainable Development. In the webinars, held in partnership with [iGravity](#), we shared with the more than 80 participants key highlights of the work done so far. The webinars helped in building a common understanding of what innovative finance is, how it is currently used by other (UN) organizations, and how the ILO could increase its engagement with innovative finance mechanisms to further promote the Decent Work Agenda. [Click here](#) to see the presentations and recordings of the webinars in English, French, and Spanish (*login to Papyrus required*).



GAIN Webinar Series

[The](#)



[Green Jobs Assessment Institutions Network](#) (ILO/Green Jobs Programme) is organising, since July 2018, a bimonthly [webinar series](#) that aim at providing a platform for knowledge sharing and dissemination among individual researchers, international organisations, research institutes and policy makers. The topics discussed address the study of the employment impacts of environmental challenges and green policies. Following this objective, these web conferences tend to offer an interesting mix between evidence-based research and a policy-oriented discussion. The webinars are open to external audience and are also recorded and subsequently uploaded on the ILO/Green Jobs Programme website. If you are interested in the project, please contact greenjobs@ilo.org and we will include you in our email list.